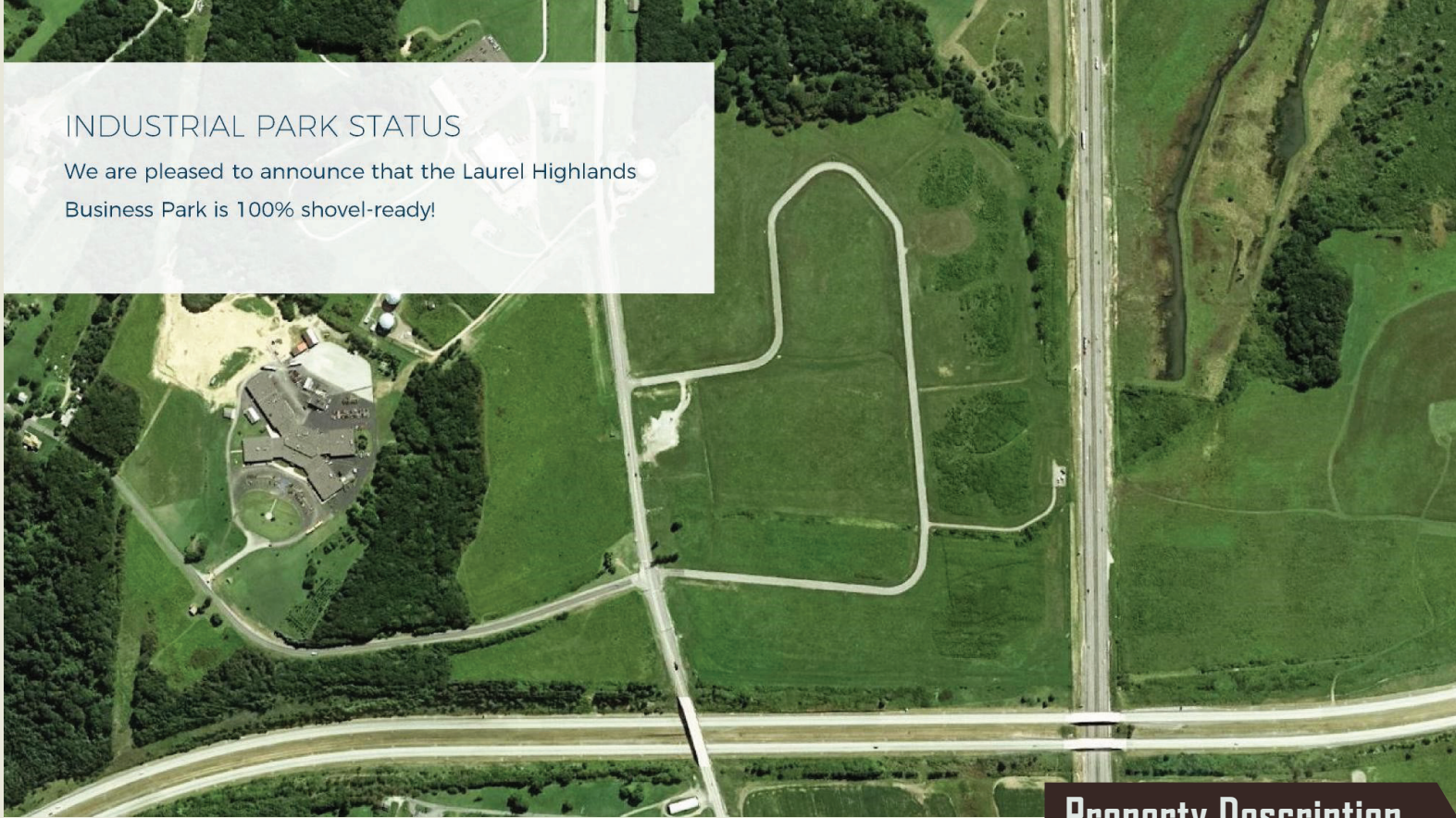


Laurel Highlands Business Park

Somerset County, PA

INDUSTRIAL PARK STATUS

We are pleased to announce that the Laurel Highlands Business Park is 100% shovel-ready!



Comments: At approximately 94 beautiful acres, the Laurel Highlands Business Park is a mixed-use development site. Lot configurations can be subdivided to meet the specific needs of the developer. Available, on-site utilities include: public water and sewer, natural gas, underground electricity, and high-speed internet.

Our business park is designated as a Pennsylvania Keystone Innovation Zone (KIZ) and a Keystone Opportunity Zone (KOZ). The LHBP is located along PA Route 31 with excellent visibility from the Pennsylvania Turnpike and US Route 219.

Somerset County is nestled in the beautiful Laurel Highlands of Southwestern, PA. Historically known for its strong work ethic and patriotic "Made in America" commitment, our county was built by courageous men and women with grand visions. Throughout history, Somerset County has proven to be a world leader in many highly competitive industries such as manufacturing, agriculture, energy, and healthcare.

Property Description

- 94 Acres
- Mixed use development
- Public water/sewer
- Natural gas
- Underground electricity
- High-speed internet
- KIZ
- KOZ

All information provided is considered reliable, but no warranty or representation is made as to the accuracy thereof and same is submitted subject to errors, omissions, change of price, rental or other conditions, without notice. No liability of any kind is to be imposed on the corporation herein.

JARI 
Growing Your Region

245 Market Street
Suite 200
Johnstown, PA 15901
www.jari.com

Listing Agent: Michele Clapper
JARI
mclapper@jari.com
814.535.8675