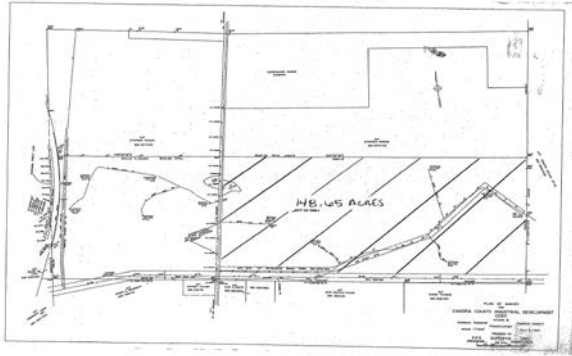


**Cambria County Industrial Development Land  
EBENSBURG, PA**

**Phone:  
814-535-8675**



**LOCATION:** Route 160  
Ebensburg, PA 15931  
[\(Map\)](#)

**COUNTY:** Cambria

**LOT SIZE:** 148.65 Acres

**Property Description**

**SITE INFORMATION:**

148.65 acre park managed by the Cambria County Industrial Development Corporation.  
Will subdivide

**PARK TENANTS:**

Contact Cambria County Industrial Development Corporation

**UTILITY INFORMATION:**

Water: Ebensburg Municipal Authority  
Sewer: Ebensburg Municipal Authority  
Electric: Penelec  
Gas: Dominion Peoples

Telecommunications:

**# OF PARCELS:**

**ENVIRONMENTAL STUDIES:**

**TAX ABATEMENTS:** No

**TRANSPORTATION ACCESS:**

1/4 mile from intersection of U.S. Routes 22 and 219. The PA Turnpike (interstates 70 and 76) is approximately 60 miles east to Bedford and 40 miles south to Somerset. 17 miles to airport.

**Listing Information**

Asking Price: \$5,000/Acre Possession: Immediate Comments: Will Subdivide

Listing Agent: Cambria County Industrial Development Corporation  
814.472.7420